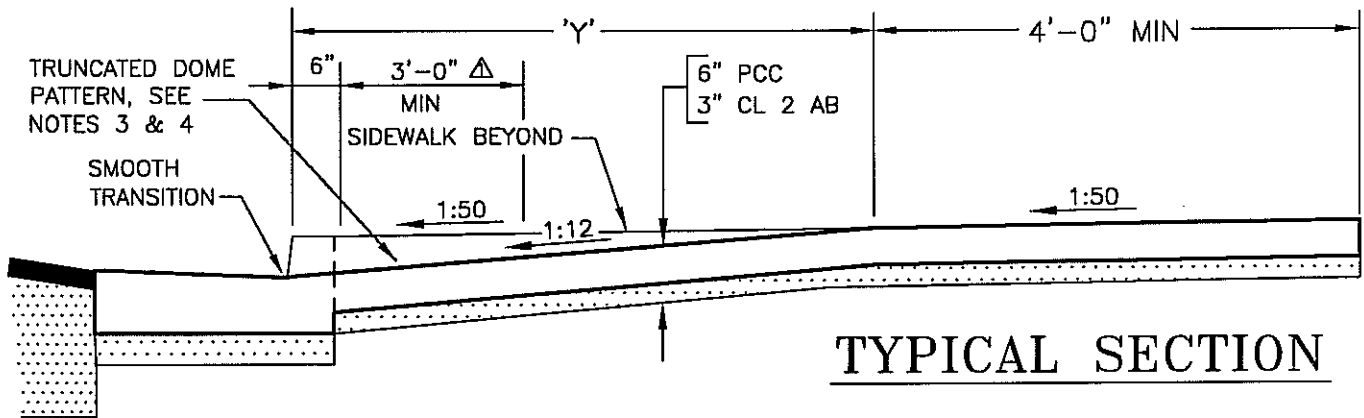


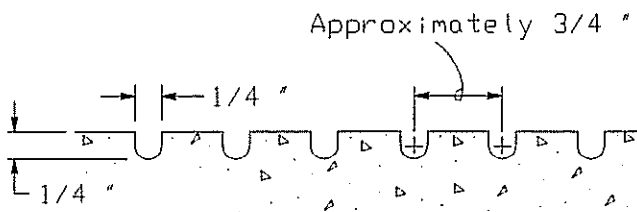
PLAN
CASE 3 / CASE 5 COMBINED

NOTES

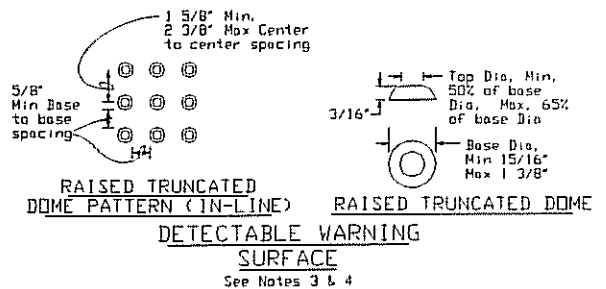
1. RAMP SHALL BE 4' WIDE AT BOTTOM, 3' MINIMUM AT TOP.
2. THE TEXTURE OF THE RAMP SURFACE SHALL BE ROUGHER THAN THE TEXTURE OF THE SURROUNDING SIDEWALK (SLIP RESISTANT).
3. CURB RAMPS SHALL HAVE A TRUNCATED DOME (DETECTABLE WARNING) SURFACE THAT EXTENDS THE FULL WIDTH AND 3' - 0" ALONG THE CURB RAMP, AS SHOWN ON CALTRANS STANDARD PLAN AB8A, DETAIL 'H'
4. THE EDGE OF THE DETECTABLE WARNING SURFACE NEAREST THE STREET SHALL BE BETWEEN 6" AND 8" FROM THE GUTTER FLOWLINE.
5. WORK AND MATERIALS SHALL CONFORM TO THE "STANDARD SPECIFICATIONS FOR PUBLIC WORKS CONSTRUCTION", (GREEN BOOK).



TYPICAL SECTION

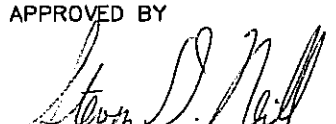


GROOVING DETAIL



DWG DATE 9-04 SCALE NTS CITY OF YREKA • DEPARTMENT OF PUBLIC WORKS

△	3-14-06	DETECTABLE WARNING
MARK	DATE	REVISION

APPROVED BY

 DIRECTOR OF PUBLIC WORKS

CURB RAMP LOCATION