

YREKA CITY NEWSLETTER

Residential Burning

Volume 2, Issue 4 April 30, 2009



Burn Permits

Burn permits are required for all outdoor residential burning, including yard waste disposal and weed control. A permit to burn within the City Limits of Yreka may be obtained at City Hall. Burn permits do not expire, however, they are usually suspended between May and November due to critical fire conditions.

Important Numbers

City Hall/
Water Division
(530) 841-2386

Fire Department
(530) 841-2383

Police Department
(530) 841-2300

Public Works
(530) 841-2370

Senior Program
(530) 841-2365

Elected Officials

Tom Amaral
Mayor

Jim Griffin
Mayor Pro Tempore

Rory McNeil
Councilmember

David Simmen
Councilmember

Jason Darrow
Councilmember

Liz Casson
City Clerk

Michael Pavlik
City Treasurer

Yard Waste Disposal

With a valid burn permit, yard waste may be burned in small heaps and piles not to exceed dimensions of 3' x 3' x 3'.



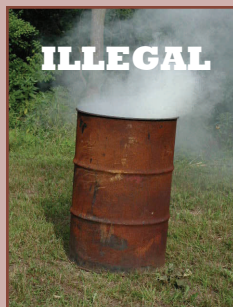
3' Max
Height



3' Max
Diameter

Prohibited Burning

The burning of household garbage, including paper products, is prohibited by State law. As of 2004, burn barrels are also banned.



Safe Burning Practices

- Read and follow all precautions on your burn permit.
- Burning shall be confined from daylight to dark.
- Never burn on windy days or during long dry periods.
- When practical, consider composting material rather than burning. Leaves are ideal for composting.
- Be neighborly. If your smoke becomes a problem, put your fire out and burn when conditions are more smoke-management friendly.

Before you burn:

- Call the Siskiyou County Air Pollution District at (530) 842-8123 to ensure that it is a permissible burn day.
- Keep burn piles a minimum of 50 feet from any buildings or structures.
- Clear an area of at least 6 feet around your burn pile.
- Check for any overhead electrical wires or branches.
- Never use flammable liquids such as gasoline to start your fire.

While Burning:

- Never leave the fire unattended. At least one able-bodied adult must be present at all times.
- Keep a shovel and rake present.
- Have a reliable water source (garden hose or water bucket) or extinguisher accessible at all times.
- Wear protective clothing such as sturdy boots, pants, long-sleeved shirt and gloves.

Extinguishment:

- Make sure the fire is completely extinguished before leaving the premises so it cannot rekindle on its own.
- Check the burned out/extinguished fire several times afterwards to ensure that it is safe and not smoldering.

Weed Control

The burning of small plots of grass and weeds is permitted on lots or yard premises with the accompaniment of a burn permit.

Inside this issue:

Residential Burning	1
Senior Program	2
Community Garden	2

Senior Program

The City of Yreka is joining hands with Madrone Hospice in a collaborative effort to provide senior services to area residents. For over thirty years, the City has operated senior congregate meal, homebound meal and bus transportation programs. However, in the current economic environment of Federal and State grant funding program cuts, the City needed to find new solutions. And it has done just that. Madrone Hospice has stepped forward to apply for these grants as a program operator and the City will continue to be a financial partner and offer the Community Center facilities and buses. By pooling resources of local match and grant funds, the program is expected to continue and even expand on these vital senior service areas.



Yreka Community Garden

Location: 431 Knapp St (behind the YHS District Office)

A place where individuals, families, and groups may grow nutritious, fresh vegetables and fruit for themselves and community food banks.

The Garden will:

- ◆ Improve food security for those in need
- ◆ Improve nutritional awareness and promote healthy eating habits
- ◆ Provide opportunities for positive social interaction and recreation
- ◆ Offer educational programs on topics related to gardening and nutrition
- ◆ Promote the health and well-being of participants with special needs
- ◆ Nurture curiosity and provide hands-on education in the Children's Garden



Contributions will assist with:

- Tools/garden equipment
- Construction materials
- Top soil
- Compost
- Mulch
- Irrigation equipment
- Weed-eater
- Insurance costs
- Utilities

**Please send your tax-deductible contributions to:
The Siskiyou Arboretum
PO Box 36
Yreka, CA 96097
Tax ID #26-3547599**

Facilities include:

- ⇒ Raised bed plots
- ⇒ Accessible garden space
- ⇒ Children's garden
- ⇒ Community Bulletin Board
- ⇒ Shade structure
- ⇒ Small shed
- ⇒ Songbird garden
- ⇒ Large greenhouse

Educational programs will be an integral component of the community garden project. Workshops and classes will be open to the public and will be taught by local professionals or experts in their field. The purpose of such classes will be to empower local citizens to increase self-sufficiency and food security through gardening and to improve health via nutrition. Some such classes may include: Seed starting, basics of organic vegetable growing, greenhouse gardening, fruit tree care, composting, organic pest management, food preservation, nutrition, cooking from the garden, using herbs in the kitchen, and others.

For information, volunteer opportunities, or donations, please contact: Tiffany Paine at (530) 842-3808.